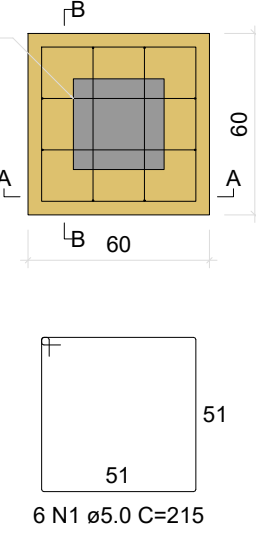
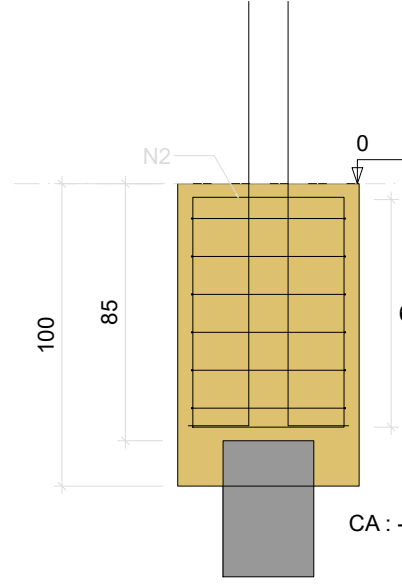


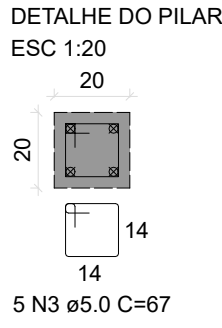
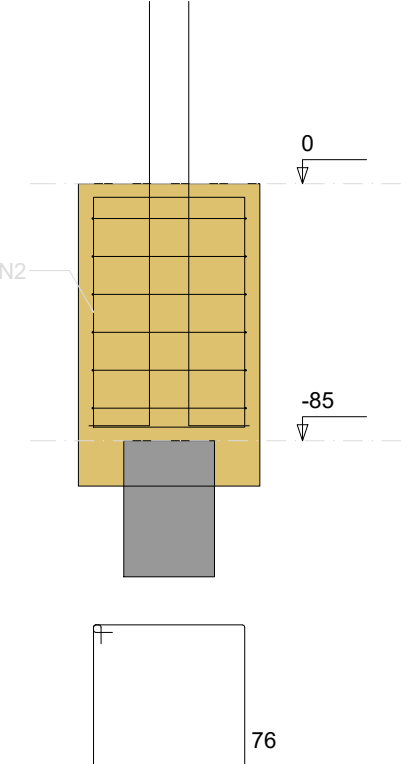
B40  
1xR30  
PLANTA  
ESC 1:25



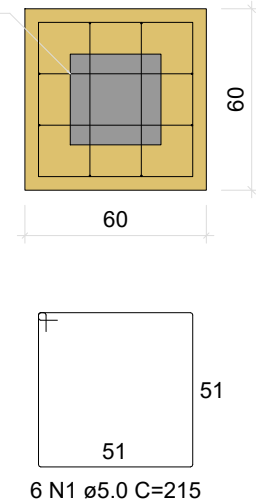
CORTE A-A  
ESC 1:25



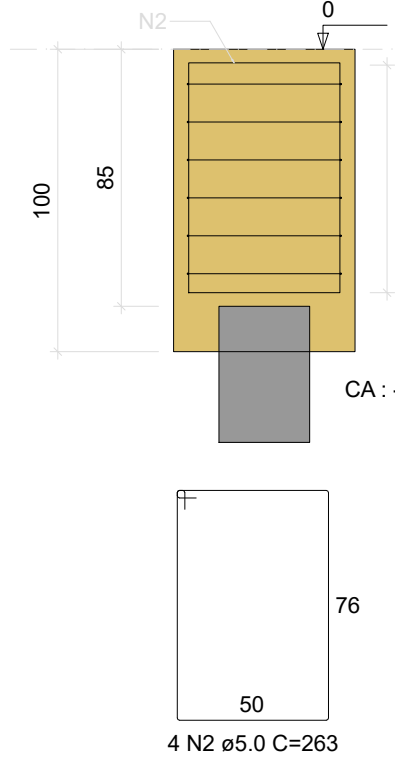
CORTE B-B  
ESC 1:25



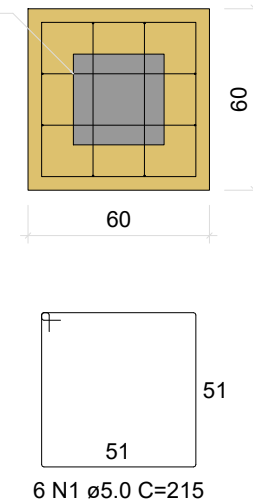
BII-P41  
1xR30  
PLANTA  
ESC 1:25



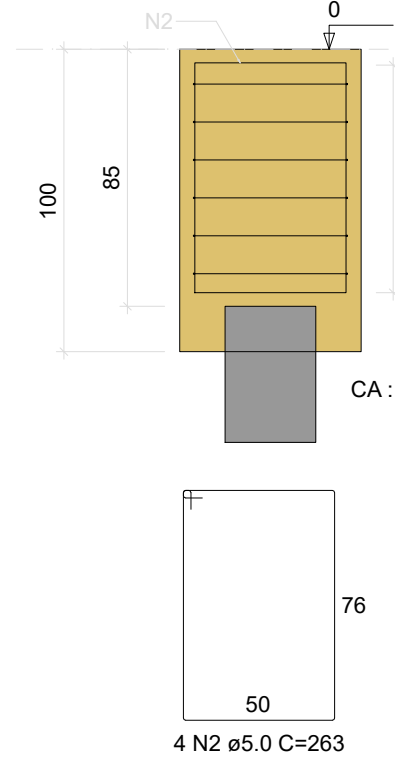
CORTE  
ESC 1:25



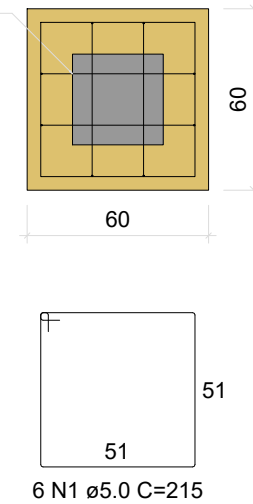
BII-P42  
1xR30  
PLANTA  
ESC 1:25



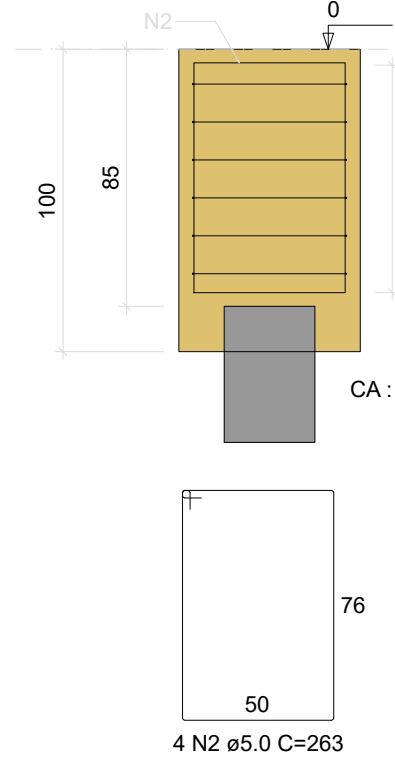
CORTE  
ESC 1:25



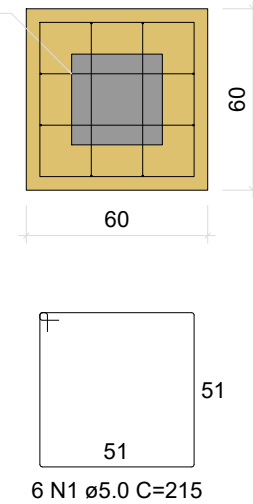
BII-P43  
1xR30  
PLANTA  
ESC 1:25



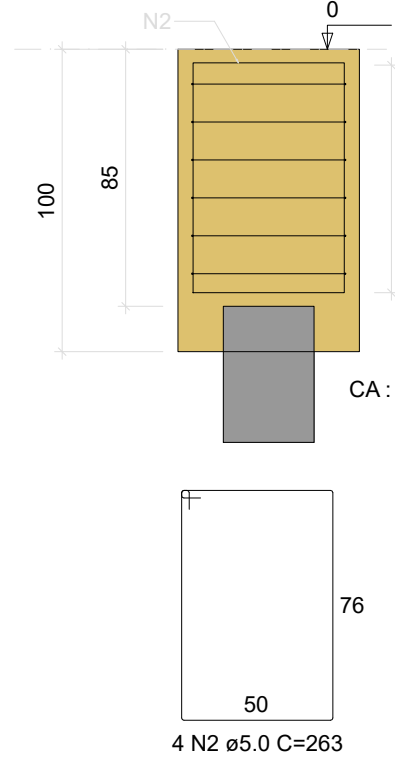
CORTE  
ESC 1:25



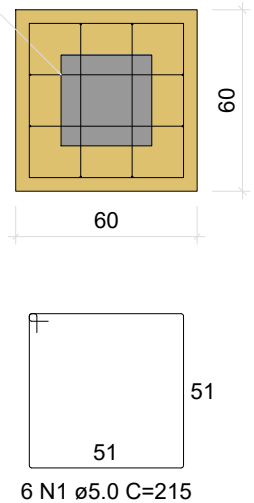
BII-P44  
1xR30  
PLANTA  
ESC 1:25



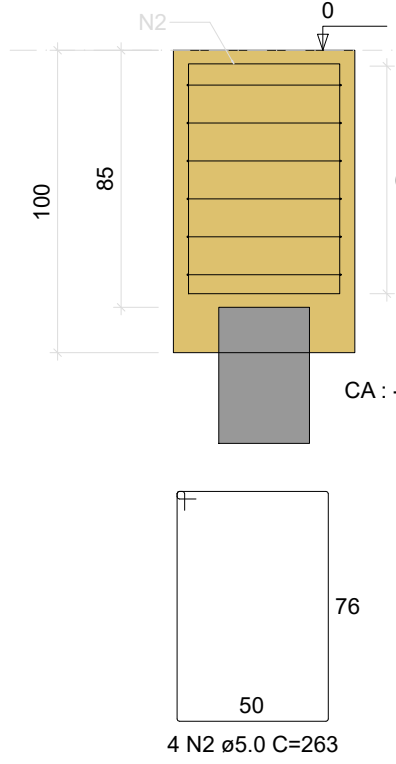
CORTE  
ESC 1:25



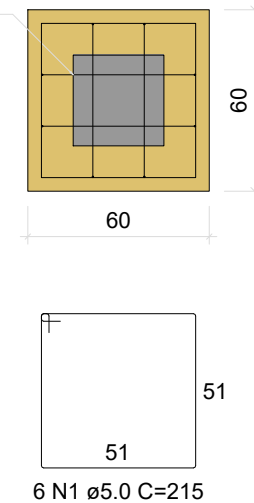
BII-P45  
1xR30  
PLANTA  
ESC 1:25



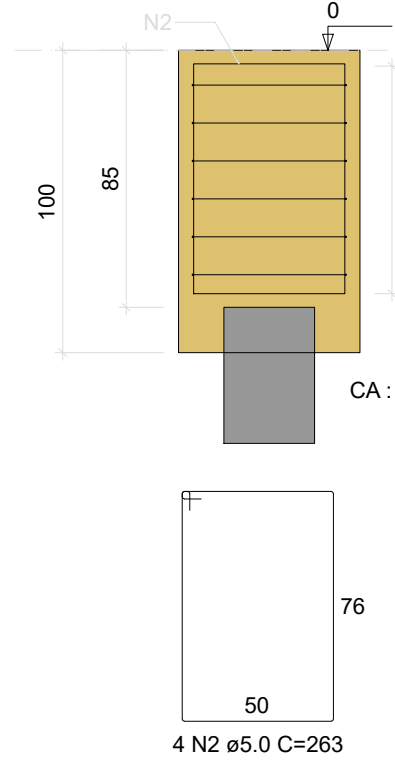
CORTE  
ESC 1:25



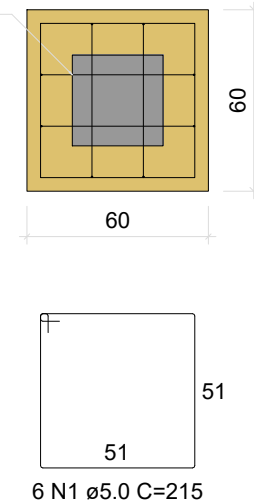
BII-P46  
1xR30  
PLANTA  
ESC 1:25



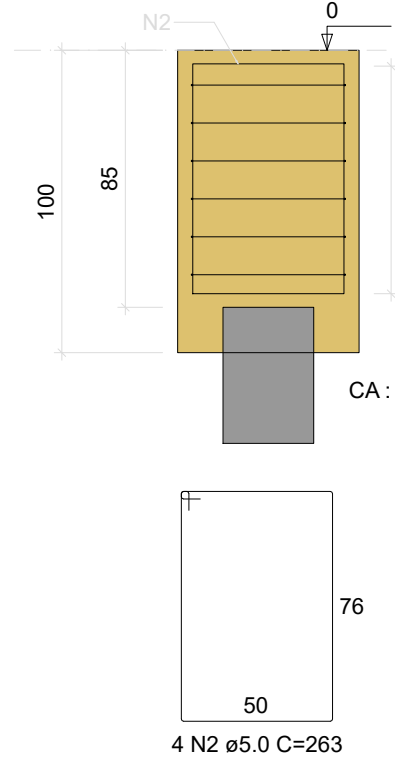
CORTE  
ESC 1:25



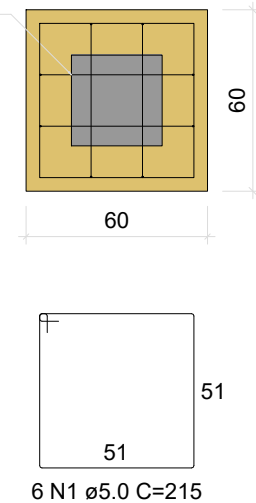
BII-P47  
1xR30  
PLANTA  
ESC 1:25



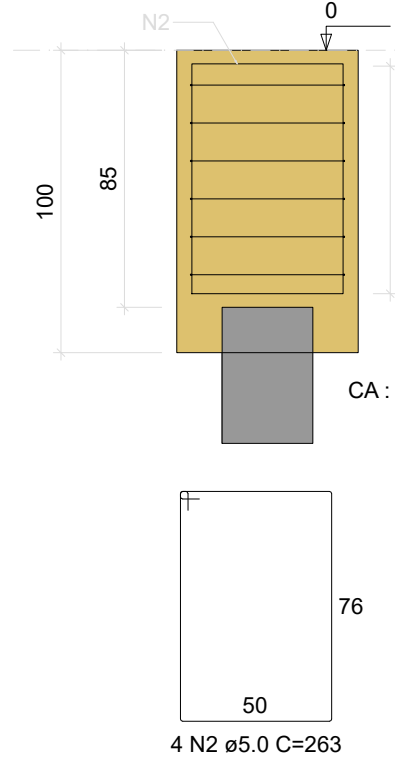
CORTE  
ESC 1:25



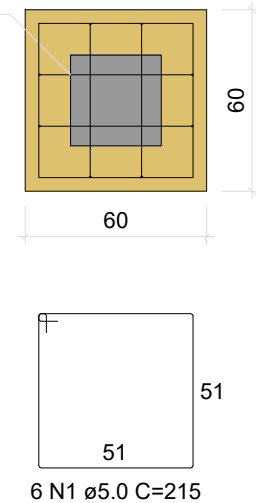
BII-P48  
1xR30  
PLANTA  
ESC 1:25



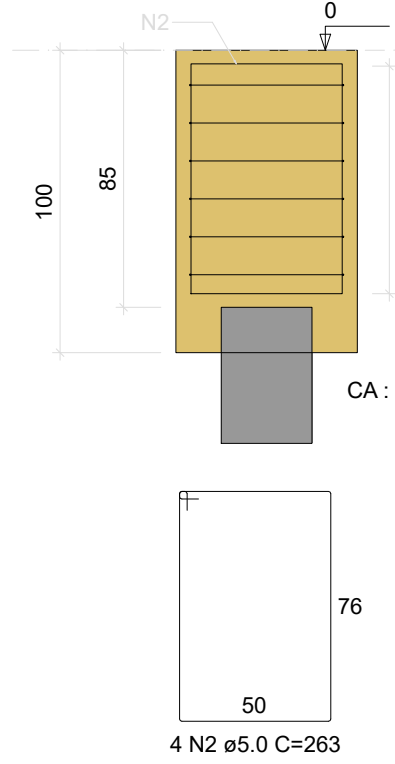
CORTE  
ESC 1:25



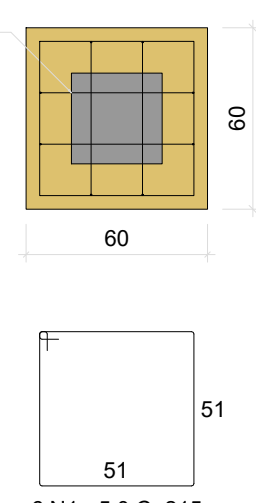
BII-P49  
1xR30  
PLANTA  
ESC 1:25



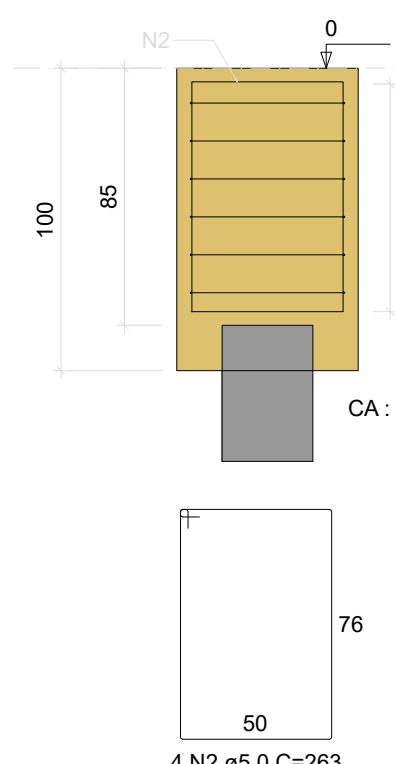
CORTE  
ESC 1:25



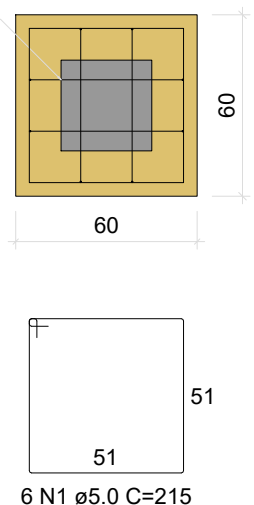
BII-P59  
1xR30  
PLANTA  
ESC 1:25



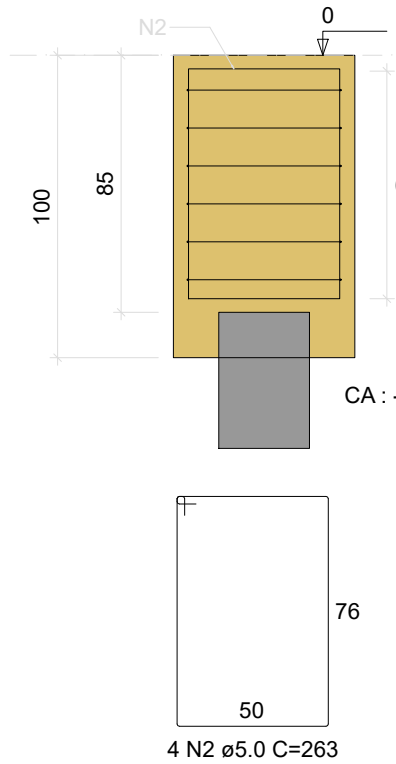
CORTE  
ESC 1:25



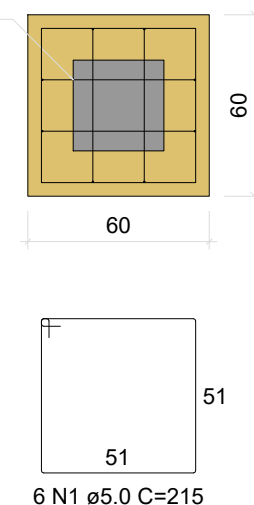
BII-P50  
1xR30  
PLANTA  
ESC 1:25



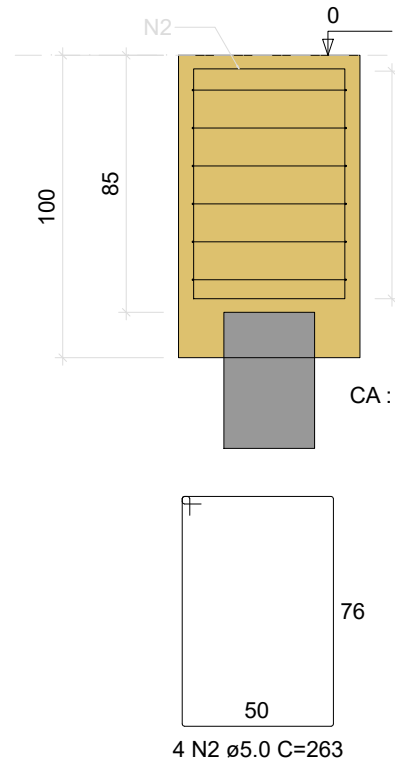
CORTE  
ESC 1:25



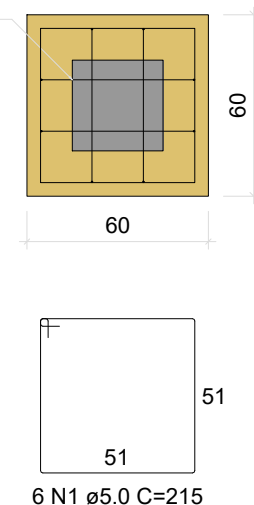
BII-P51  
1xR30  
PLANTA  
ESC 1:25



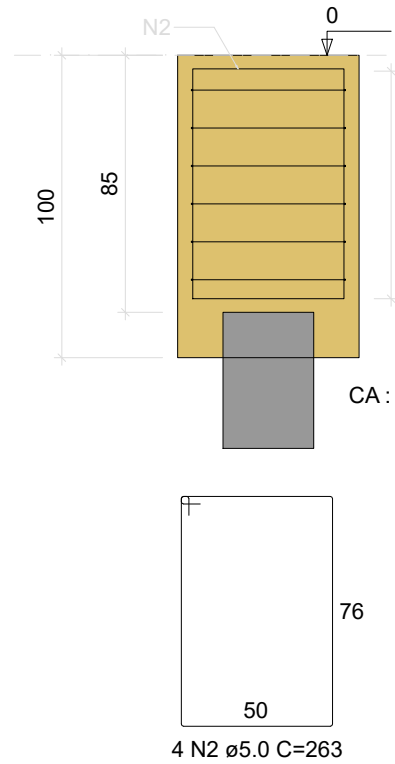
CORTE  
ESC 1:25



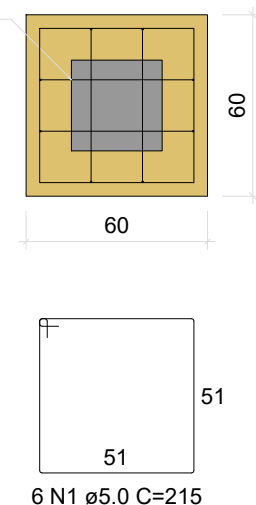
BII-P52  
1xR30  
PLANTA  
ESC 1:25



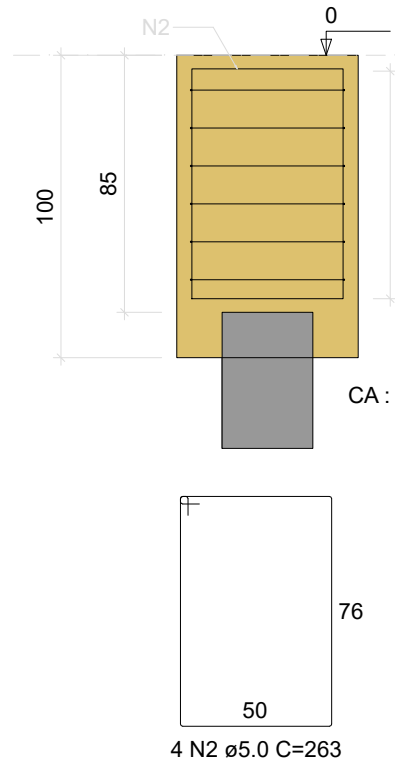
CORTE  
ESC 1:25



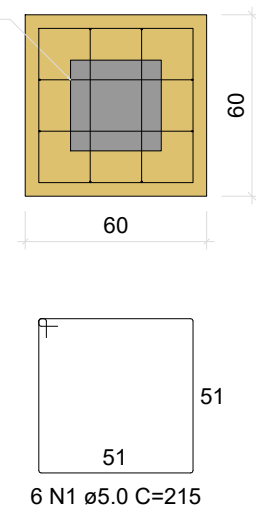
BII-P53  
1xR30  
PLANTA  
ESC 1:25



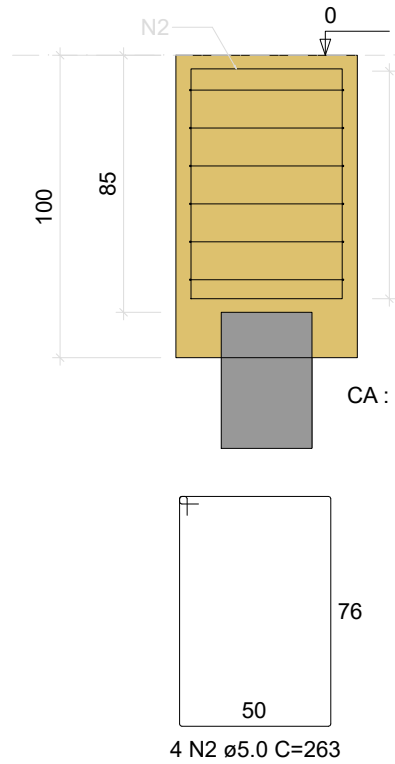
CORTE  
ESC 1:25



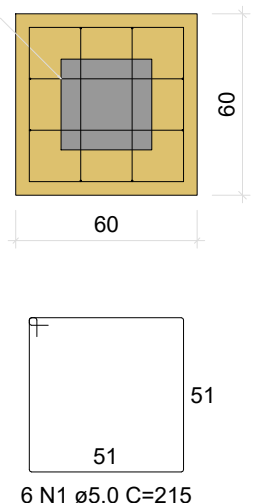
BII-P54  
1xR30  
PLANTA  
ESC 1:25



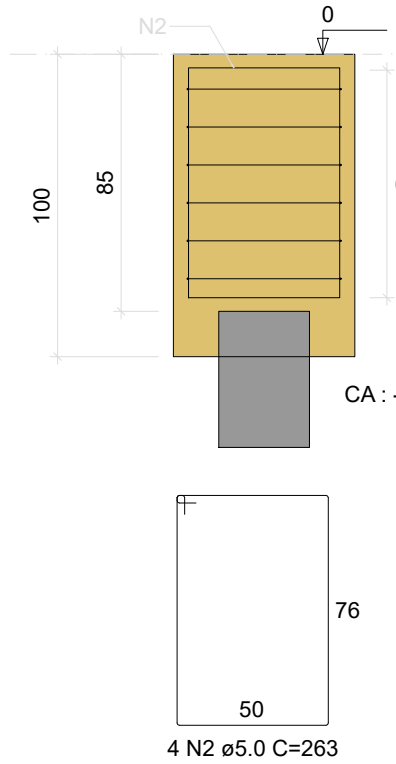
CORTE  
ESC 1:25



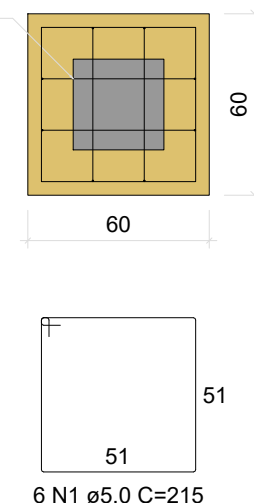
BII-P55  
1xR30  
PLANTA  
ESC 1:25



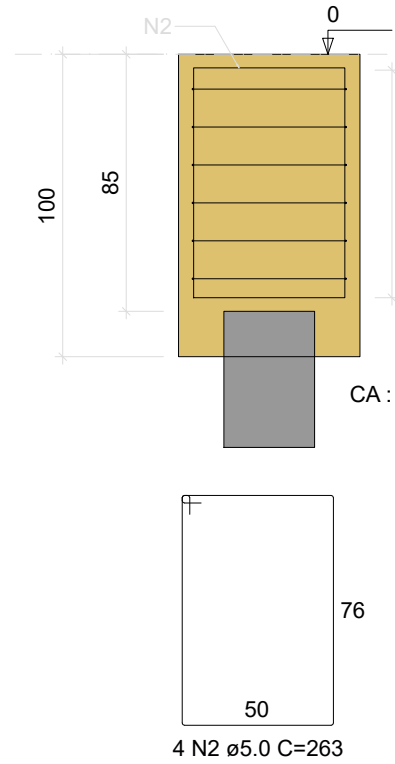
CORTE  
ESC 1:25



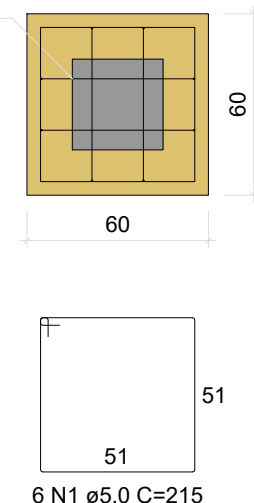
BII-P56  
1xR30  
PLANTA  
ESC 1:25



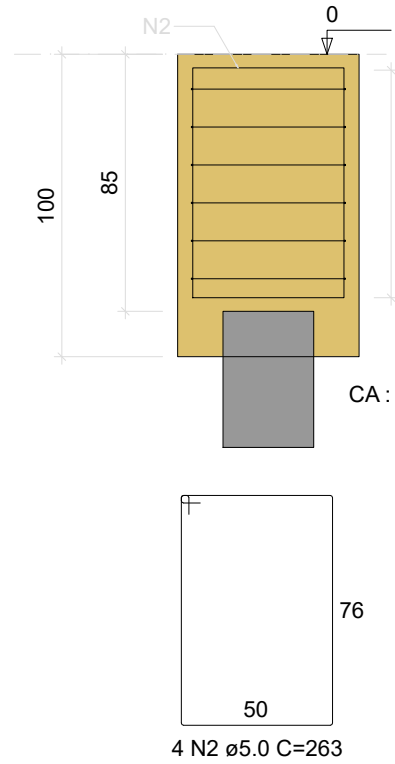
CORTE  
ESC 1:25



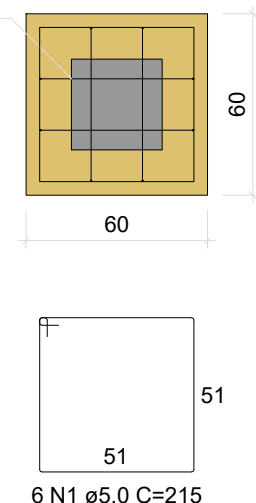
BII-P57  
1xR30  
PLANTA  
ESC 1:25



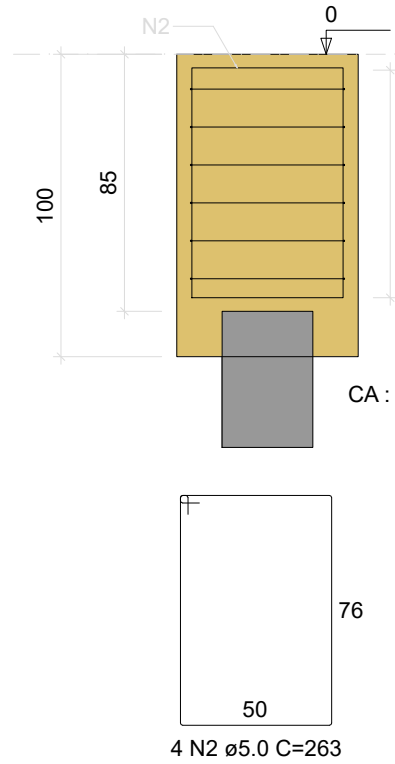
CORTE  
ESC 1:25



BII-P58  
1xR30  
PLANTA  
ESC 1:25



CORTE  
ESC 1:25



RELAÇÃO DO AÇO

AÇO	N	DIAM (mm)	QUANT	C.UNIT (cm)	C.TOTAL (cm)
CA60	1	5.0	120	215	25800
CA60	2	5.0	80	263	21040

RESUMO DO AÇO

AÇO	DIAM (mm)	C.TOTAL (m)	PESO + 10% (kg)
CA60	5.0	468.4	79.4
PESO TOTAL (kg)			79.4

Volume de concreto (C-25) = 6.93 m³  
Área de forma = 48.00 m²

TODAS AS MEDIDAS E NÍVEIS DEVERÃO SER CONFERIDOS NO LOCAL.

R003			
R002			
R001			
REVISÃO	ALTERAÇÕES	EMISSÃO	RESPONSÁVEL

UNIDADE DE SAÚDE QUINTA DO PORTAL



**PREFEITURA MUNICIPAL DE PORTO ALEGRE**  
SECRETARIA MUNICIPAL DE OBRAS E INFRAESTRUTURA  
DIRETORIA DE PROJETOS E OBRAS VIÁRIAS

RESPONSÁVEIS TÉCNICOS PROJETO DE ARQUITETURA: <b>JULIANO FABRO</b> ARQUITETO E URBANISTA CAU.A22875-3   ID. FUNC. 1609270	PROJETO DE ARQUITETURA: <b>LUIZ PRESTES</b> ARQUITETO E URBANISTA CAU.A23531-8   ID. FUNC. 270122	PROJETO EXECUTIVO ESTRUTURAL: <b>AMANDA DA CUNHA FIGUEIRA</b> ENGENHEIRA CIVIL CREA.RS193.391   ID. FUNC. 1606638	COORDENADOR <b>CÉSAR FABRÍCIO BRENDA</b> DESENHO <b>AMANDA</b>
---	--	--	---

OBRA <b>US QUINTA DO PORTAL</b>	ÁREA <b>672.53 m²</b>
ENDEREÇO <b>ESTRADA AFONSO LOURENÇO MARIANTE, Nº 5547 - LOMBA DO PINHEIRO</b>	MUNICÍPIO <b>PORTO ALEGRE/RS</b>
PROJETO <b>EXECUTIVO ESTRUTURAL</b>	ASSUNTO <b>SETOR SII BLOCOS DE FUNDAÇÃO - 03</b>
ESCALA <b>INDICADA</b>	DATA <b>ABRIL/2024</b>
Nº PRANCHA <b>PE26</b>	

NOME ARQUIVO  
USQP-2024-EST-PEE.dwg

Setor I - SI

Setor II - SII